

Lightning talk



Privacy
Awareness
Week

OVIC
Office of the Victorian
Information Commissioner

What to know before you rely on AI



Tuesday 5 May 2026
2 pm – 2.15 pm AEST

What is Artificial Intelligence



A sub-field of computer science with the goal of creating programs and tools that can perform tasks that would normally require human intelligence, such as learning, reasoning, and making decisions.



What is Generative AI

A wide-ranging term that encompasses any form of AI that is capable of generating new content such as text, images, voice, video, and code by learning from data patterns

Examples of Gen-AI

ChatGPT

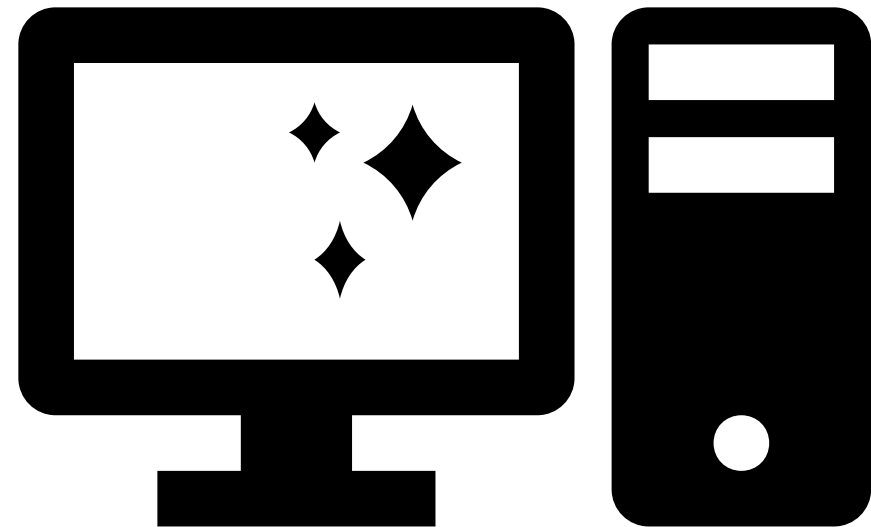
Google Gemini

Microsoft 365 Copilot

Grok

MetaAI

Hear Me Out



Risks and challenges

To an individual's personal information when using Gen-AI tools

- Accuracy of the data the model is trained on
- Accuracy of the content generated
- Disclosure of your personal information
- Delays when engaging with an organisation



Key Tips to Keep in Mind

- Limit what personal information you share with a Gen-AI tool
- Consider the tool as a guide not the answer
- Adjust the settings
- Review the output of the Gen-AI tool



For more information visit

<https://ovic.vic.gov.au/privacy/for-the-public/>

Look for:

- Before you rely on AI: what to know
- Your privacy rights
- Make a privacy complaint
- Data breaches and you

OVIC